



Waste Receptacles



Huskee

The Commercial Container



DURABLE LIDS

Tight closure. Allows receptacles to be stacked.



BAG CLINCH

Secures the poly liner on 32, 44 and 55 gallon sizes, without having to tie it!

HEAVY-DUTY HANDLE

Reinforced handles provide securing areas for lifting or moving the receptacle

FLANGED RIM

Adds strength and durability

High-quality, commercial-grade wall stock is perfect for cold climates.

REINFORCED BASE

Extra reinforcement produces a much stronger and longer-lasting receptacle!



RECEPTACLES, LIDS and ACCESSORIES

Simply put, Revive Supplies line of indoor and outdoor receptacles is the best! Best in choice, functionality and value. Add our dollies and accessories to maximize performance and add even more value.



Huskee Round

The industry standard! Molded with seamless construction, the Huskee is a strong, long lasting receptacle that is used everywhere. From food prep to foundries, from refuse to bio-hazard waste. Huskee keeps working.

10 Gallon Rim Dimension: 15.625" Diameter

Colors: Grey (GY), White (WH)

20 Gallon Rim Dimension: 19" Diameter

Colors: Blue (BL), Grey (GY), White (WH)

32 Gallon Rim Dimension: 21.75" Diameter

Colors: Black (BK), Blue (BL), Grey (GY), Red (RD), White (WH), Yellow (YW)

44 Gallon Rim Dimension: 14" Diameter

Colors: Grey (GY), White (WH)

55 Gallon Rim Dimension: 26.25" Diameter

Colors: Grey (GY)



FAQ's...

Which Huskee receptacles are NSF: Standard 21 rated?
All bases and lids.

Which Huskee receptacles are NSF: Standard 2 rated?
Grey and white bases & lids.

Which Huskee receptacles are FDA and USDA approved?
All our Huskee receptacles, from 10 to 55 gallon, are made of FDA compliant material. USDA requirements for material approval are satisfied by a certification of FDA compliance.

What temperature range can a Huskee withstand?
0 -190° F for NSF rated items, 0 - 205° F for all other Huskee receptacles.

What material are Huskee receptacles made of? LLDPE

Can you store wine in a Huskee? We recommend against using a Huskee, or other plastic waste receptacles, for wine storage. During the fermenting progress, the taste of plastic can pass into the wine.

Item #	Size	Dimensions	Color	Case Pack	Pallet Qty.
1001	10 gal.	17 ¹ / ₂ " x 17 ¹ / ₈ " H	Multi	6	18 pks.
2000	20 gal.	22" x 22 ¹ / ₂ " H	Multi	6	4 pks.
3200*	32 gal.	24 ³ / ₄ " x 27 ¹ / ₂ " H	Multi	---	24
4444*	44 gal.	27" x 31" H	Multi	---	16
5500*	55 gal.	29" x 33 ¹ / ₈ " H	Grey	---	12

*Must be purchased in full pallet quantities.

**3200BK is not Hot Stamped or NSF Approved. Ships 48 per pallet.

RECEPTACLES, LIDS and ACCESSORIES

A) Huskee Round Flat Lids

Molded with seamless construction for durability and easy, thorough cleaning. Lids fit securely to keep waste and odors in, and rain and pests, out. Interlocking design allows Huskee receptacles to be stacked.

10 Gallon Colors: Grey (GY), White (WH)

20 Gallon Colors: Grey (GY), White (WH)

32 Gallon Colors: Grey (GY), Red (RD), White (WH), Yellow (YW)

44 Gallon Colors: Grey (GY), White (WH)



Item #	Fits	Dimensions	Color	Case Pack
1002	10 gal.	17 ¹ / ₈ " x 1 ¹ / ₄ " H	Multi	6
2001	20 gal.	20" x 1 ¹ / ₄ " H	Multi	6
3201	32 gal.	24 ³ / ₈ " x 1 ¹ / ₂ " H	Multi	6
4445	44 gal.	24 ³ / ₄ " x 1 ¹ / ₂ " H	Multi	4



B) Huskee Round Dolly

The twist-on, twist-off Dolly converts a stationary Huskee into a mobile, hard-working tool. Fits the 20, 32, 44 and 55 gallon. Round and Square Huskees. Features 3" non-marking swivel casters.

Item #	Description	Number of Casters	Weight Capacity	Color	Case Pack	Pallet Qty.
3255-8	Round Dolly	Five	250 lbs.	Black	8	6 Pks.

Must be purchased in full Pallet quantities.



RECEPTACLES, LIDS and ACCESSORIES

A) Wall Hugger

Revive Supplies Wall Huggers have a sleek and attractive design that holds 23 gallons of waste, but protrudes less than one foot from the wall. The smooth, seamless design provides prolonged life and promotes easy cleaning. The addition of a Wall Hugger Drop Shot Lid helps to conceal waste while providing an inviting, enlarged opening for waste disposal. The 8.25" x 16.75" opening is the largest available in a Wall Hugger Style receptacle.

Colors: Beige (BE), Black (BK), Brown (BN), Grey (GY)

Item #	Size / Style	Dimensions	Pallet Qty.
8322	23 gal.	20" x 11" x 30" H	32

Must be purchased in full pallet quantities.



B) Value Line Wall Hugger

An economical choice! Smooth, seamless construction holds 23 gallons of waste, but protrudes less than one foot from the wall. Large 8.25" x 16.75"

Colors: Black (BK), Grey (GY)

Item #	Size / Style	Dimensions	Pallet Qty.
8323VL	23 gal.	20" x 11" x 30" H	32

Must be purchased in full pallet quantities.



C) Wall Hugger Lids

Drop Shot Lid Colors: Black (BK), Brown (BN) Grey (GY)

Item #	Size / Style	Dimensions	Lid/Opening	Case Pack
7325	Drop Shot Lid	20 1/4" x 11 1/2" x 4 5/8" H	16 1/4" x 8 1/4" H	4



WASTEBASKETS

Indoor wastebaskets are ideal for offices, schools, healthcare, and more. These sleek and simple products provide solutions to meet all of your needs.

A) Swingline

Square swingline containers provide 25% more capacity than round containers of the same height, which equates to labor and poly liner savings. The rolled rim provides strength and a convenient area to lift or pull. Reinforced base will take rough commercial use and they rest for easy storage,

25 Colors: Beige (BE), Brown (BN), Grey (GY)

Item #	Size	Dimensions	Case Pack
25	25 gal.	16 ¹ / ₄ " x 16 ¹ / ₄ " x 26 ⁵ / ₈ " H	4



B) Commercial Plastic Wastebasket

The low profile and sleek, attractive design of these wastebaskets make them the right choice for a variety of applications such as classroom, office, commercial and institutional use.

1358 Colors: Black (BK), Brown (BN), Grey (GY)

2818 Colors: Beige (BE), Black (BK), Brown (BN) Grey (GY)

4114 Colors: Beige (BE), Black (BK), Grey (GY)

Item #	Size / Shape	Dimensions	Case Pack
1358	13 ⁵ / ₈ qt. Rectangle	11 ³ / ₈ " x 8" x 12" H	12
2818	28 ¹ / ₈ qt. Rectangle	14 ³ / ₈ " x 10 ¹ / ₄ " x 15" H	12
4114	41 ¹ / ₄ qt. Rectangle	15 ¹ / ₂ " x 11 ¹ / ₂ " x 19 ³ / ₄ " H	12



RECYCLING

Revive Supplies has a wide variety of recycling receptacles that promote and enhance a comprehensive recycling program. Made from recycled resins, our products are highly functional and durable. Innovative, sleek and attractive designs encourage users to support recycling programs.



RECYCLING WASTEBASKET

Commercial Wastebasket

The low profile design of these rectangular wastebaskets make them ideal for a variety of recycle applications such as office, classroom, commercial or institutional usage.

Item #	Size / Shape	Dimensions	Color	Case Pack
1358-1	13 ⁵ / ₈ qt. Rectangle	11 ³ / ₈ " x 8" x 12" H	Blue	12
2818-1	28 ¹ / ₈ qt. Rectangle	14 ³ / ₈ " x 10 ¹ / ₄ " x 15" H	Blue	12
4114-1	41 ¹ / ₄ qt. Rectangle	15 ¹ / ₂ " x 11 ¹ / ₂ " x 19 ³ / ₄ " H	Blue	12



RECYCLING RECEPTACLES

Huskee Round

Molded of engineered resins with seamless construction, the Huskee is a strong, long-lasting receptacle for recycling applications. For mobility, add the Huskee dolly.

Item #	Size	Dimensions	Color	Case Pack	Pallet Qty.
2000-1	20 gal.	22" x 22 1/2" H	Blue	6	4 Pks.
3200-1*	32 gal.	24 3/4" x 27 1/2" H	Blue	---	24

**Must be purchased in full pallet quantities.*

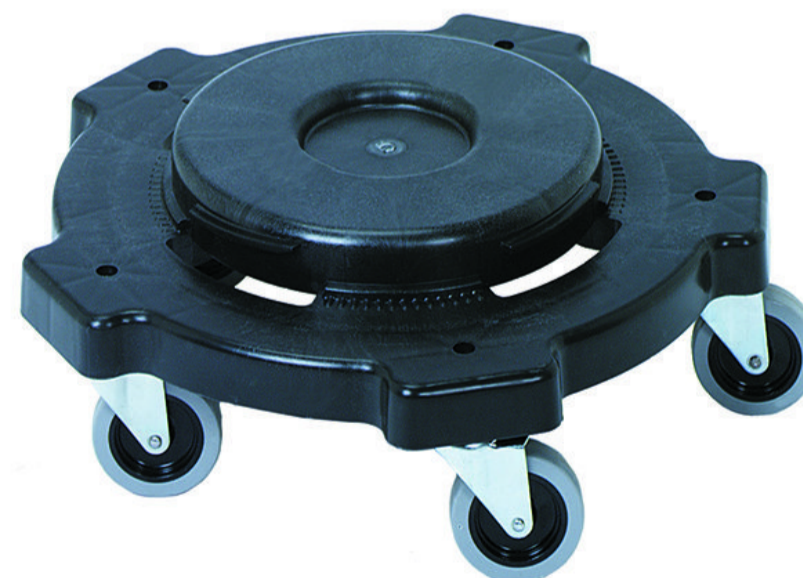


Huskee Round Dolly

The twist-on, twist-off Dolly converts a stationary Huskee into a mobile, hard-working tool. Fits the 20, 32, 44 and 55 gallon. Round and Square Huskees. Features 3" non-marking swivel casters.

Item #	Description	Number of Casters	Weight Capacity	Color	Case Pack	Pallet Qty.
3255-8	Round Dolly	Five	250 lbs.	Black	8	6 Pks.

Must be purchased in full Pallet quantities.



RECYCLING RECEPTACLES

Wall Hugger Recycle Receptacle

Built of durable plastic, these receptacles work efficiently in tight spaces. Their sleek, attractive design holds 23 gallons of recyclables, but protrude less than one foot from the wall. A molded-in bag cinch eliminates the need to tie knots in poly liners. The base features molded-in hand grips which provide a secure area to grasp when lifting or dumping. Designed with smooth, seamless construction for easy cleaning and prolonged life. At 30" tall, it is ideal for placement under standard work tables.

Item #	Size / Style	Dimensions	Color	Pallet Qty.
8322-1	23 gal.	20" x 11" x 30" H	Blue	32

Must be purchased in full pallet quantities.





REVIVE
SUPPLIES